

March 13, 2022

Second Sunday in Lent

Mass Intentions:

Shrine:

Saturday 03/12 – Red Hewitt (RIP)

St. Jude:

Sunday 03/13— Tara Gallagher (RIP)

We Remember in Our Prayers:

Please continue to pray for those at home or at a care facility:

Continued Request For Prayer:

Recent Requests For Prayer:

Peg Indilla

NOTE: Please send requests for additions to prayer request.

St_jude1@stjudefranklin.org

In the subject line please add prayer requests or call the office at 757-569-9600.

Thank you!

Get well cards for the home bound-

Please stop by and sign in the commons!



St. Jude	Actual	Budget	Difference
----------	--------	--------	------------

03/06/2022	3,919	2,423	+1,496
------------	-------	-------	--------

YTD	83,395	87,228	-3,833
-----	--------	--------	--------

Shrine	Actual	Budget	Difference
--------	--------	--------	------------

No Bag Yet

YTD	8,478	10,780	-2,302
-----	-------	--------	--------

Repair and Maintenance :

St. Jude	Actual	Budget	Diff.
----------	--------	--------	-------

3/2022	525	1,667	-1,142
--------	-----	-------	--------

YTD	23,265	20,004	+3,261
-----	--------	--------	--------



Second Collections:



March:

3/5—Winter Fuel (Shrine)

3/13—Repair & Maintenance (St. Jude)

3/20—Winter Fuel Fund (St. Jude)

03/27—Catholic Relief Services (St. Jude/Shrine)

April:

04/03—Catholic Virginian (St. Jude)

Franklin Cooperative Ministry Collection:



The second Sunday of every month marks the Franklin Cooperative Ministry food collection to help those in our community that are in need. Please give to help the needy. We appreciate your contributions.



News & Reminders: Join us!

Adult Bible Study—Gospel of John: Each Sunday after Mass

What's happening?

There will be no weekday masses until further notice.

March:

03/12—Mass 5PM—Fr. Creed (Shrine)

03/13—Mass 10:30AM—Fr. Les (St. Jude)

03/18—Stations of the Cross—6PM (St. Jude)

03/19—Stations of the Cross—4:30PM (Shrine)

03/19—Mass—5PM—Fr. Les (Shrine)

03/20—Mass—10:30AM—Fr. Les (St. Jude)

03/23—Lenten Reconciliation Service—

Fr. Tony & Fr. Emanuel—7PM (St. Jude)

03/25—Annunciation of the Lord— Fr. Les—Noon (St. Jude)

03/25—Stations of the Cross—6PM (St. Jude)

03/26—Stations of the Cross—4:30PM (Shrine)

April: (Masses Shrine & St. Jude—Fr. Les)

04/01—Stations of the Cross—6PM (St. Jude)

04/02—Stations of the Cross—4:30PM (Shrine)

4/02—Confessions—4PM— Fr. Les (Shrine)

4/02—Mass—5PM—Fr. Les (Shrine)

4/03—Confessions—9AM —Fr. Les (St. Jude)

4/03—Mass—10:30AM—Fr. Les (St. Jude)

04/08—Stations of the Cross—6PM (St. Jude)

04/09—Stations of the Cross—4:30pm (Shrine)

04/09—Mass—5PM—Fr. Les (Shrine)

4/10—Mass—10:30AM—Fr. Les (St. Jude)

04/14—Holy Thursday—12noon—Fr. Les (St. Jude)

04/15—Good Friday—Stations of the Cross—Fr. Les—2PM (St. Jude)

04/15—Celebration of the Lord's Passion—Fr. Les—3PM (St. Jude)



Congratulations to St. Jude's Confirmands to be confirmed Next Thursday, March 17th, at St. Therese in Chesapeake!

Please congratulate, Jean-Phillip Misseri & Gretta Hahn!

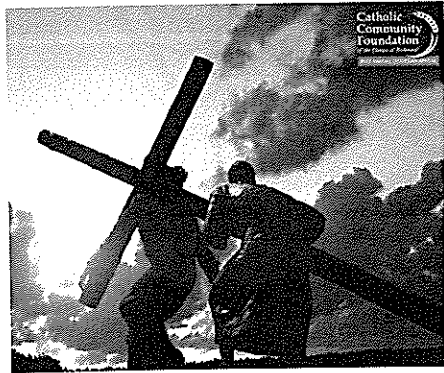


St. Jude Committees & Ministries

You can be involved too!

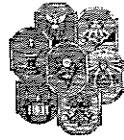
Funeral	Counters
Hospitality	Lectors
Repair & Maintenance	Altar Servers
Social Ministry	Eucharistic Ministers

2022 Annual Diocesan Appeal:



“The Transfiguration reveals the glory of Jesus and gives us confidence to engage in Lenten disciplines like almsgiving with trust and generosity. As you prayerfully discern how you can give this Lenten season, please consider contributing to our Annual Diocesan Appeal. “

Sacraments



Baptism: By appointment with Pastor, Baptismal class required: Contact Kimberly Rogerson

St_jude1@stjudefranklin.org

Marriage: 6 months preparation including Pre-Cana and/or Engaged Encounter.

Communion for Sick &/or Homebound:

Please phone parish office to have a Eucharistic Minister visit and offer communion.



To report abuse allegations:

Report immediately to local law enforcement and the

Attorney General's Clergy Abuse Hotline at 1(833)454-9064

EthicsPoint™ Hotline:

For anonymous reporting of misconduct within the Diocese of Richmond. Toll-free # (844)-739-3210 or www.richmonddiocese.org and select “EthicsPoint.”

Contact Information

St. Jude Office: Tel. # (757)569-9600 Fax# (757)304-9338

St. Jude Office Hours: Mon.—Thursday: 9AM—2PM.

Parish Website: <https://stjudefranklin.org/>

Email: st_jude1@stjudefranklin.org

Facebook: facebook.com/stjudeparishfranklin

Finance Council Chairman: Calvin Holt Email: calvinjholt@msn.com

Parish Pastoral Council Chairman: Nita Holt Email: calvinnitaholt@verizon.net

Faith Formation Coordinator: Mirna Misseri Email: faithformation@stjudefranklin.org

Administrative Assistant/Bookkeeper: Kimberly Rogerson Email: kim.rogersonofficeemail@gmail.com

Repair & Maintenance: - Contact Office

Funeral Ministry Director: Mary McDaniel

Choir Director: —Jesse Tupea

Eucharistic Minister Director: —Leisa Billups

Counting Team Director: —Teresa Preston Lector Director: —Mary Edwards

**If you are interested in one of these ministries contact the director of that ministry.*

In case of death or dying please contact parish office .

Outside of office hours call- (434) 594-2436 (Kim's Cell)

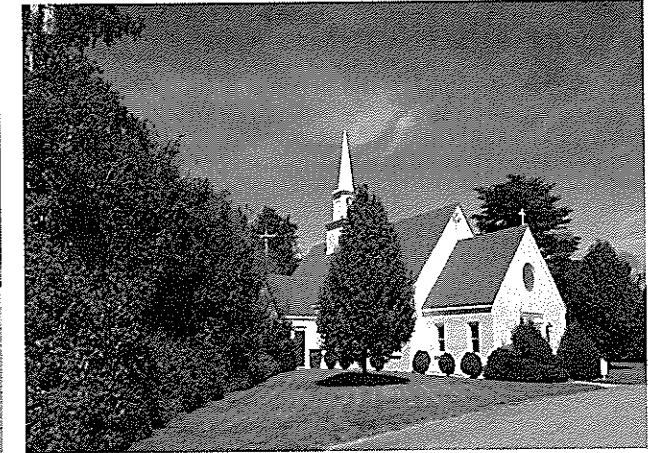
St. Jude Catholic Church

1014 Clay Street, Franklin, VA.
23851



The Shrine of the Infant Jesus of Prague

HWY 460, Wakefield, VA.
23888



*Very Rev. Romeo Jazmin, VF
Temporary Administrator*

St. Jude Weekday Mass Times

No Weekday Masses At this time.

Weekend Mass Times:

Shrine: Sat. 5:00PM

St. Jude: Sun. 10:30AM

Reconciliation:

Shrine: First Sat. of the Month after 5:00PM Mass, or by appointment.

St. Jude: By appointment.